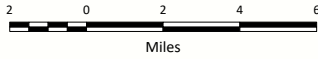
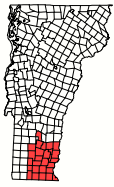


2024 Windham Regional Plan



Generation Sites

- Ⓟ Biogeneration site (<1MW)
- Ⓜ Hydro generation site < 1MW
- Ⓜ Hydro generation site > 1MW
- Ⓜ Wind generation site (>1MW)
- Ⓢ Solar generation site > 1 MW
- Ⓢ Solar generation site >= 100 KW and < 1 MW
- Ⓢ Solar generation site >= 15 KW and < 100 MW

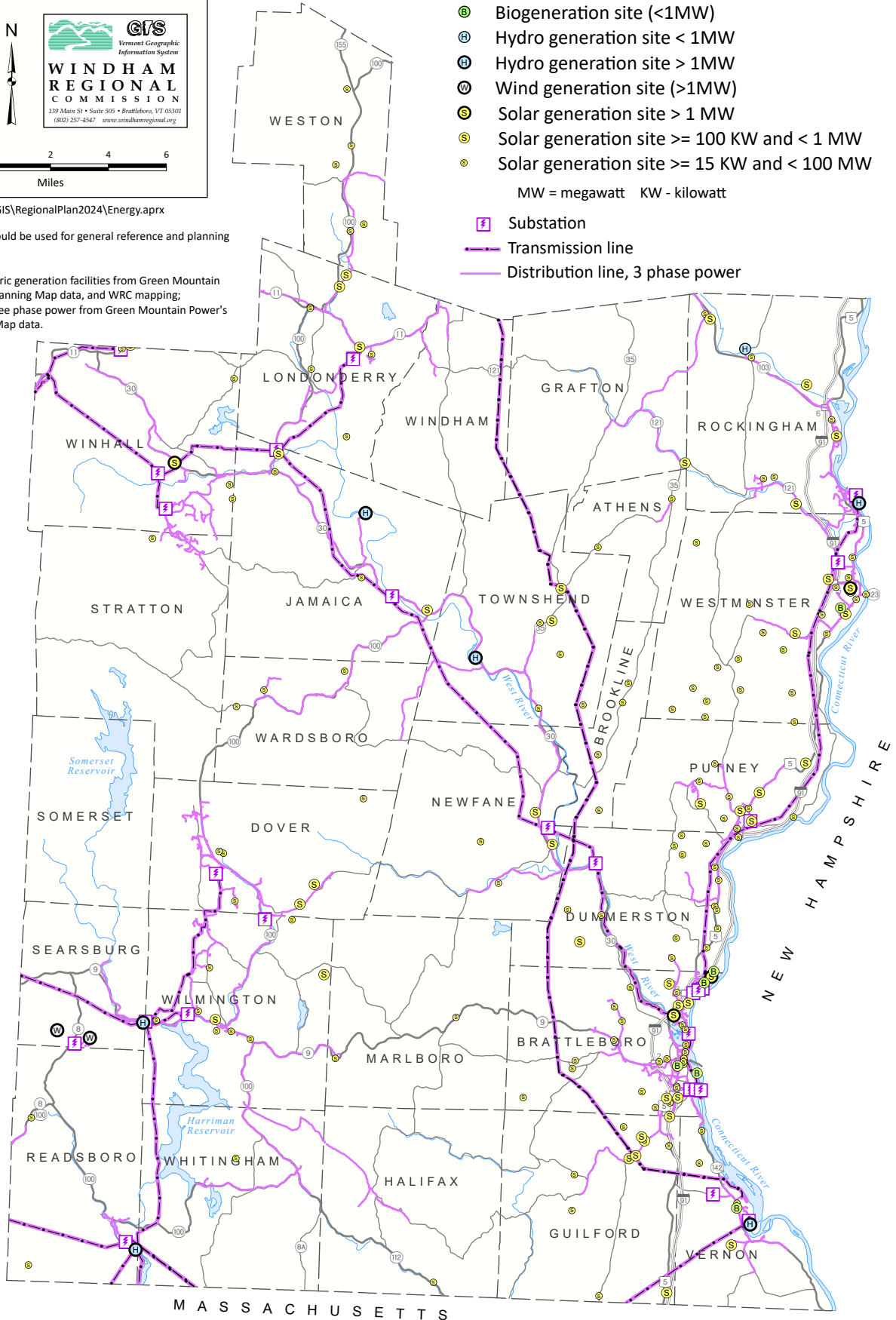
MW = megawatt KW - kilowatt

- Ⓜ Substation
- Transmission line
- Distribution line, 3 phase power

September 2024; u:\GIS\RegionalPlan2024\Energy.aprx

Note: This map should be used for general reference and planning purposes only.

Data sources: electric generation facilities from Green Mountain Power's Capacity Planning Map data, and WRC mapping; substations and three phase power from Green Mountain Power's Capacity Planning Map data.



M A S S A C H U S E T T S